

Miata Window Bushing

Installation Instructions

1990-2005 Mazda Miata

PART #909-925

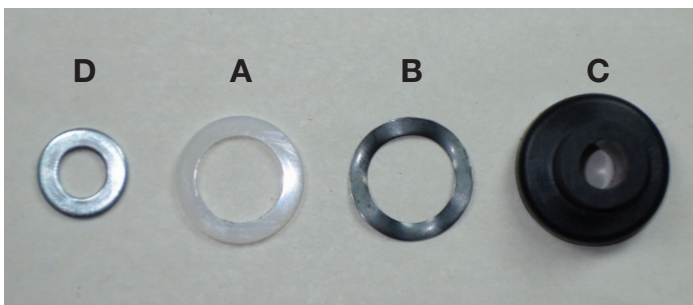
Tools required:

- 10mm Socket
- T-30 Torx Socket
- 3" extension
- Ratchet
- Phillips Head Screwdriver
- Small Flat Head Screwdriver
- Grease or lubricant for window tracks (optional)

The installation shown in these instructions was performed on a 1996 and 1999 Miatas. Installation on other years might be slightly different but will follow the same basic guidelines.

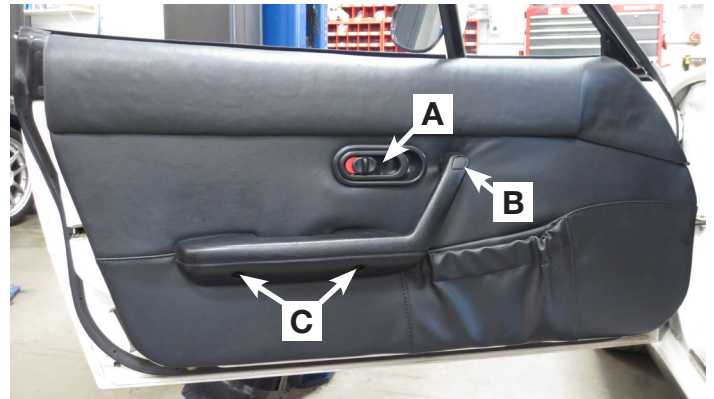
Materials Included

Item	Description	Quantity
A	Nylon Washers	2
B	Wavy Washers	2
C	Window Bushings	2
D	Metal Flat Washer	2



Removing the Door Panel

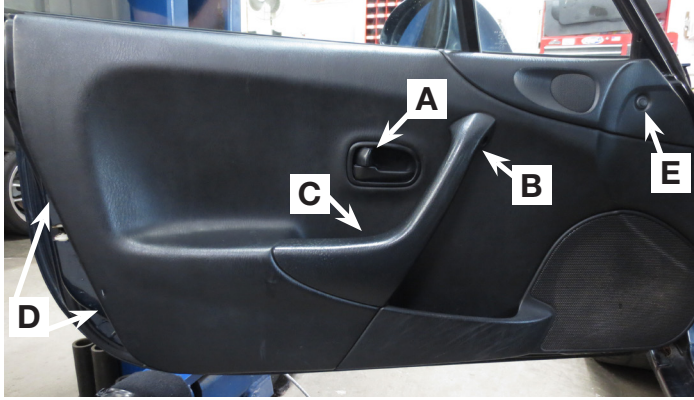
NA 1990-1997



1. Remove the four screws holding the panel to the door using a Phillips head screwdriver. The first is located just behind the door handle in the bezel **(A)**. Once the screw is removed, slide the bezel toward the inside of the vehicle, remove it, and set it aside. The next screw is located at the top of the door pull, behind a small cover **(B)**. Gently pry out the cover using a small flat head screw driver, and remove the screw. The final two screws are located in the small holes at the bottom of the door pull **(C)**. Figure 1.
2. With the screws and clips removed, the door panel can be removed by gently pulling outwards on the bottom of the door panel to release the push in clips. Once all the clips have been released, lift up to unhook the top section of the door. Do not attempt to fully remove the door at this point as there may still be wiring between the door and door panel.
3. Remove any wiring connecting the door and door panel before removal.

Installation Instructions

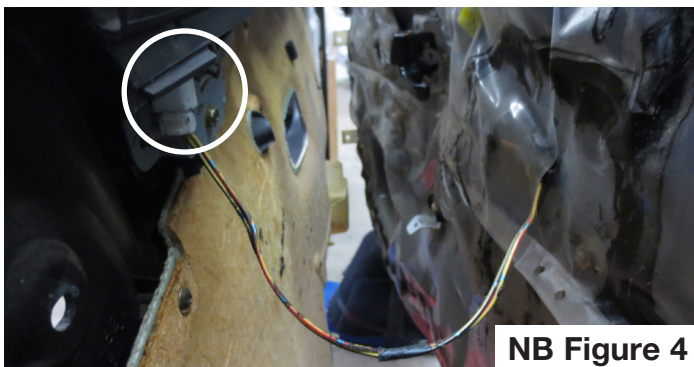
NB 1999-2005



1. Remove the three screws holding the panel to the door using a Phillips head screwdriver.

The first is located just behind the door handle in the bezel (A). Once the screw is removed, slide the bezel toward the inside of the vehicle, remove it, and set it aside. Remove the next screw located in the hole at the top of the door pull (B). The final screw is located at the base of the door pull, under the felt covering (C).

2. Locate the three clips attaching the panel to the door; Two clips are located at the rear of the door panel, in the jam (D). The third clip is located at the top right of the door panel, near where the door panel meets the dash (E). These clips can be removed by prying the center section up with the small flat head screwdriver and then pulling on the base.
3. With the screws and clips removed, the door panel can be removed by gently pulling outwards on the bottom of the door panel to release the six push in clips. Once all six clips have been released, lift up to unhook the top section of the door. Do not attempt to fully remove the door at this point as there may still be wiring between the door and door panel.
4. Remove any wiring connecting the door and door panel. NB's with the tweeter located in the top inside of the door panel will need to disconnect the tweeter before the door panel can be fully removed. NB Figure 4.



NB Figure 4

Window Removal 1990-2005

1. Once the door panel is removed, pull back the plastic covering on the outside section of the door. Avoid getting any of the black adhesive on the window.
2. Raise the window to its highest position. Take note of its height, ensure it is in the correct position, and verify it seats well when the door is closed.
3. Lower the window until the two bolts securing the window to the regulator are visible through the large hole at the bottom of the door. Remove the two bolts with a 10mm socket and ratchet. Figure 3.

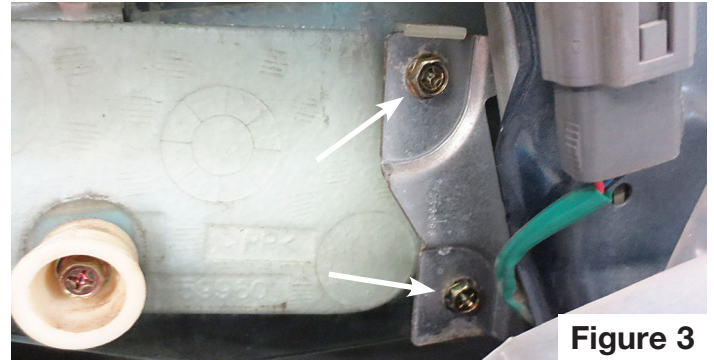


Figure 3

4. Raise the window until the third bolt that secures the window to the regulator is visible. It will be visible in the small hole above and to the right of the hole where the other two bolts were removed. Remove this bolt using the same 10mm socket and ratchet. Figure 4.



Figure 4

- Use a 10mm socket and ratchet to remove the two stops located at the top of the door. The stops are L shaped brackets that are located on the inside of the door. Each stop is secured with a single bolt. To prevent the stop from falling into the door, make sure to hold the stop from the inside as the bolt is loosened from the other side. Figure 5.



Figure 5

- Gently pull the window up and out of the door, being careful not to catch on any wires or cables in the door.
- Place the window on a soft flat surface, and locate the bushing at the bottom left of the window. Figure 7



Figure 7

- Remove the bushing using a T-30 Torx socket. Take note of the order and orientation of the washers behind the bushing. There should be a protective plastic washer on each side of the glass, inside of the metal washers.

Installation of the Bushing

- Use of the metal flat washer is optional. To determine if you need the metal washer, stand the original bushing and the new bushing side by side. If the original bushing is slightly taller, install the metal washer at the base of the new bushing. If the original bushing is the same height or shorter, the metal flat washer should not be used. It is OK if the new bushing with the metal washer is slightly taller than the stock bushing. Figure 1.

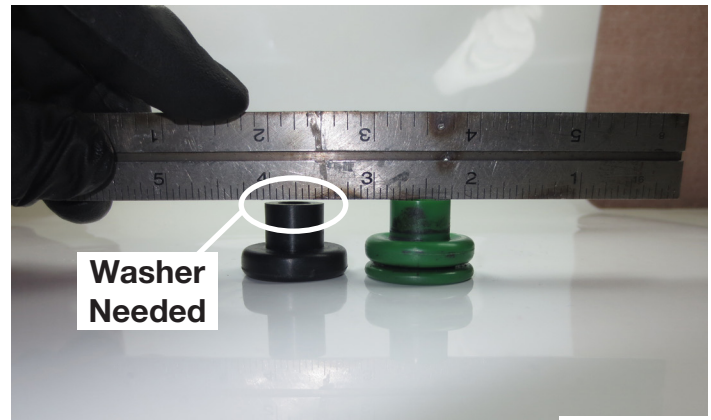
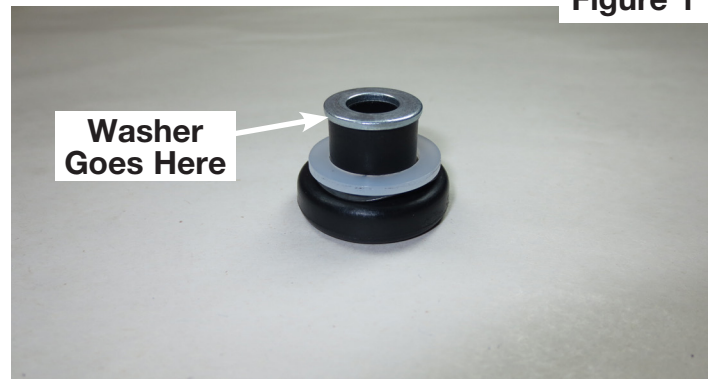


Figure 1



- Once you have determined if you need the metal flat washer, install the new bushing, wavy washer and nylon washer on to the glass using the stock parts (expect stock bushing) in the same order. Figure 2

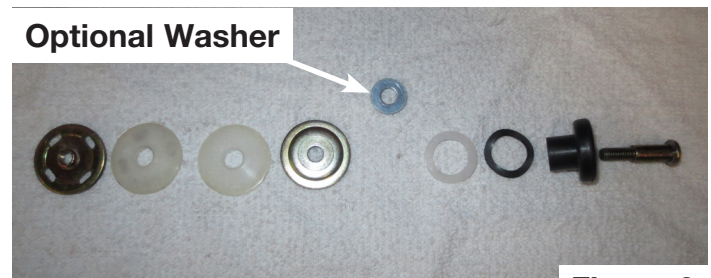


Figure 2



Optional Washer not Installed

Installation Instructions

- Depending on the original condition of the window, it may be beneficial to clean and lubricate the window tracks. Make sure the lubricant does not get on the window itself or anything that may come in contact with the glass.
- Slide the window into the door and verify that it goes into the correct guides. Ensure that the wavy and nylon washers fit into the guide with the bushing. Reinstall the three bolts attaching the glass to the regulator. Figure 4.
- Install the window stops. The original location of the stops should be visible by bolt marks left in the paint. If this is not the case, install the stops approximately where they were before. Then raise or lower the stops until the window is in the correct position noted in step 2.
- Reinstall the door panel by lowering it onto the door and pushing the clips back into the six holes in the door. Then, secure the door panel using the clips and bolts removed in the earlier steps.
- Test to make sure the window is functioning correctly, then repeat the same procedure on the other door.



Designed and Distributed by Moss Motors, Ltd.

For questions or comments please contact:

Moss Motors, Ltd.
440 Rutherford Street, Goleta, California 93117
In the US & Canada Toll Free (800) 667-7872
LOCAL (805) 681-3400 FAX (805) 692-2510



Moss Europe Ltd.
Hampton Farm Industrial Estate
Hampton Road West, Hanworth Middlesex, TW13 6DB
In the UK: 020-8867-2020 FAX: 020-8867-2030