

## Rear Strut Tower Brace Installation Instructions For 1990-2005 Mazda Miata

PART # 909-860

### Notes:

*The installation of this brace on a '90-'97 Miata requires the removal of the spare tire.*

*'99-'05 Miata's will need to modify some of the finish trim panels in the trunk. The earlier cars do not have these trim panels.*

*'90-'05 will need to modify the fuel line cover panel in the trunk.*

*Read and understand these instructions before beginning the installation of this brace.*

### Tools required:

- Phillips screw driver
- Small flat screw driver or a pick
- 3/8" and 1/4" Ratchets
- 10mm, 14mm, 19mm sockets
- 10mm Allen wrench
- 3" and 6" extensions
- Ruler
- Scissors
- Side cutters
- Tinsnips
- File or sand paper
- Felt tipped pen

- 1) Remove the floor mat from the trunk. Remove the board covering the battery.



**Illustration 1**



**Illustration 1 cont.**

- 2) Using a Philips screwdriver, remove the cubby on the left side of the trunk floor.

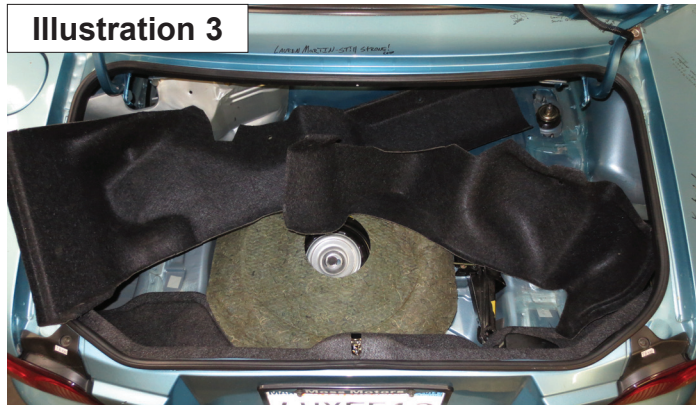


**Illustration 2**



## Installation Instructions

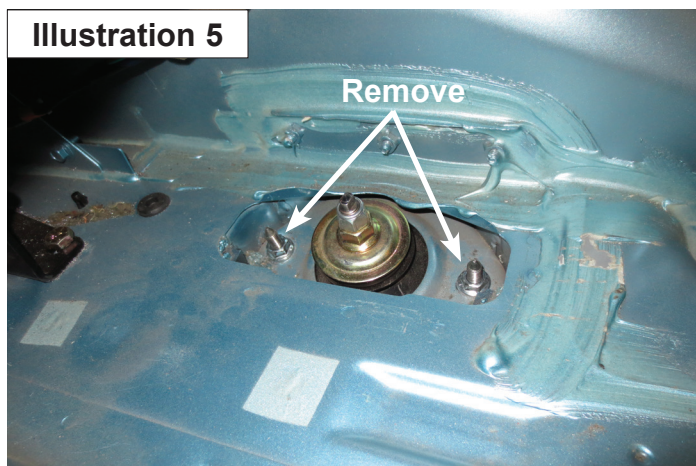
- Using a small flat screwdriver or pick, remove all the push-in fasteners that are securing the trunk side finish panels. Remove left and right finish panels closest to the passenger compartment of the car. The rear most trim panel can be left in place.



- Using a ratchet and 10mm socket, remove the metal panel that is covering the fuel filler hoses.



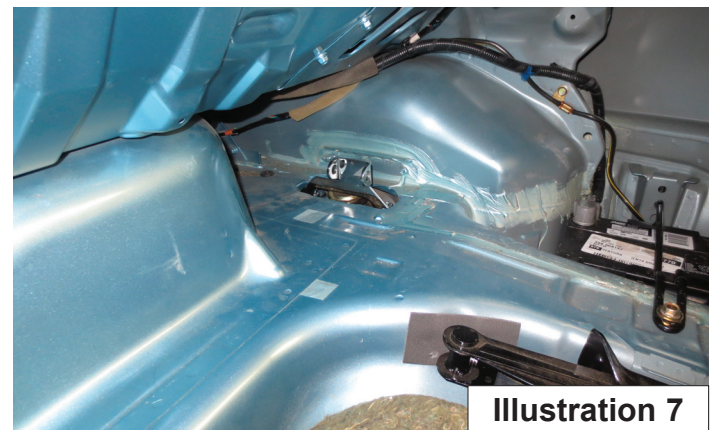
- Using a ratchet, 3" and 6" extensions, and a 14mm socket, remove the (four) nuts securing the strut tops to the body of the car. Do not remove the center nuts that hold the strut assembly together.



- Disassemble the new strut tower brace using a 10mm Allen wrench, ratchet and 19mm socket.



- Set each of the strut brace end brackets over the strut top studs. The brace will only fit with the bracket offset toward the rear of the car. Start a nut onto each of the studs a few threads but do not tighten them down.

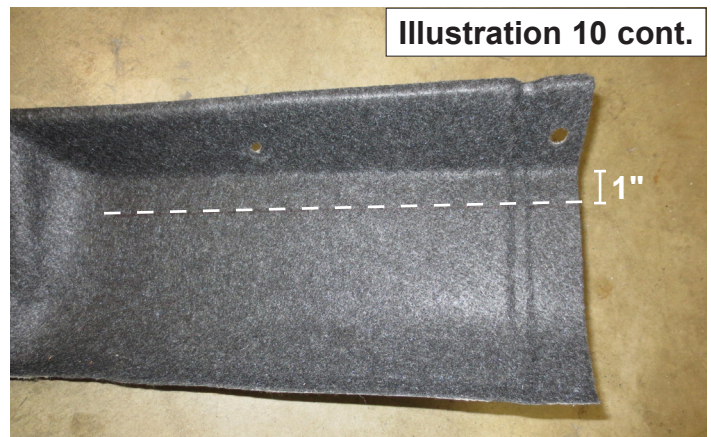


- Reassemble the brace and brackets in the car. If the brackets are too tight you will not be able to get the large Allen head bolts through the brackets and brace. Once the brace and brackets are assembled with the logo facing the rear of the car, tighten the strut top nuts. Next tighten the strut brace hardware.





- 9) Try test fitting the fuel line cover panel. You'll notice the panel needs to be trimmed to be installed. Make marks on the panel using a felt tipped pen where you will trim. Remove the panel from the car and trim it using tinsnips. This may take a few test fits and trimmings to get it in place and looking good. Cut a little at a time.



- 11) Reinstall the fuel line cover panel for the last time. Once again test fit the left side finish panel. This time the panel should go almost all the way on. Trim and test fit until you are satisfied with the fit and then install it for good using the push-in fasteners.

- 10) Once the fuel line cover panel has been properly fit, test fit the (larger) left side finish panel. Take note of how it will need to be trimmed to fit around the brace. Remove the finish panel and the fuel line cover panel from the car. Using a ruler and felt tipped pen, draw a line about 1" from the corner on the long flat section of finish panel. Turn the finish panel over and lay the fuel line cover panel over it. Use the area you cut on the finish panel to mark the finish panel. Cut along the long straight line to the area the brace will pass through and then cut a small hole.



- 12) Test fit the right hand finish panel. Take note of the area that must be trimmed in order to fit around the



## Installation Instructions

brace. Remove the panel and cut a straight line in to the corner roughly splitting the angle in half. Test fit the panel and trim until you are happy with the fitment. Install the panel permanently using the push-in fasteners.

**Illustration 12**



**Illustration 12 cont.**

13) Reinstall the cubby and battery cover.

14) Install the mat onto the trunk floor. Cut a slit in the floor mat in the top right corner so it fits around the strut tower brace bracket. Enjoy your new rear strut tower brace.

**Illustration 14**

