



Instructions for both 909-350 and 909-351 are combined in a single PDF because the procedure is very similar. Notes about fitting these mirrors to an early Miata are on the last page. Read through ALL the instructions before you begin.

Unpainted Replacement Mirror Installation Instructions

For 1989-1997(NA) Mazda Miata

PART # 909-350

MOSS MOTORS, LTD.

440 Rutherford St. P.O. Box 847 Goleta, CA 93116
1-800-235-6954 • FAX 805-692-2525 • www.miatamania.com

Tools Required:

- * Phillips screwdriver
- * Utility knife, box cutter or razor blade
- * Super glue

Note: Paint the mirror housings and trim before starting this installation. There are tabs on the housings to hold while painting. They will be cut off during the install.

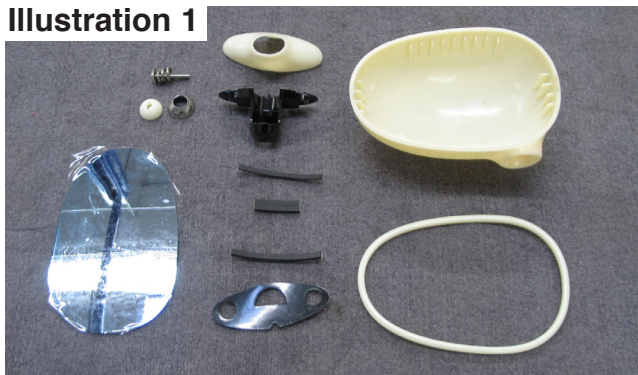
1) Lay the contents of the kit out and familiarize your self with the pieces. Assemble the mirror base as follows: Install the washer, spring and plastic ball mount onto the screw as pictured. The smaller end of the spring points toward the washer and the larger end of the spring will fit into the recessed area of the plastic ball mount. Now install the screw assembly into the metal mirror base. Snap the plastic base cover on the base and screw assembly.



Illustration 1 Cont.

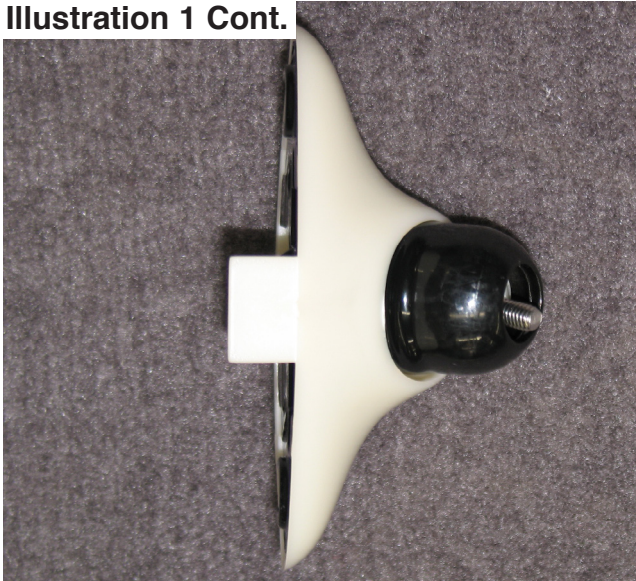


Illustration 1



Unpainted Replacement Mirror Installation Instructions

Illustration 1 Cont.



2) Set the metal ball socket on the bottom of the mirror housing. Using a Phillips screw driver, install the base assembly to the mirror housing. Do not over tighten the screw. The mirror has to be able to be adjusted once on the vehicle. Over tightening will not allow for mirror adjustment and will cause damage.



Illustration 2



Illustration 2 Cont.

3) Test fit the mirror in to the mirror housing. Install the foam pads along the edges on the back of the mirror in the areas where the ribs on the housing are. Cut the tabs from the mirror housing and the base cover. Remove the protective clear plastic coating from the mirror and reinstall in the housing. Use super glue to assemble the trim ring on the housing which will hold the mirror in place. Place the mirror face down and set an object on it while it dries.

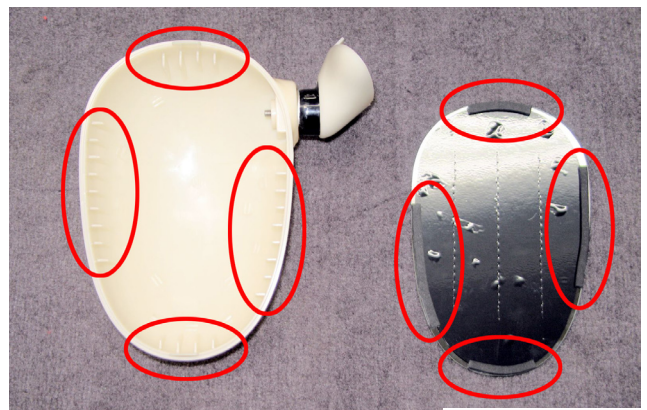


Illustration 3



Unpainted Replacement Mirror Installation Instructions

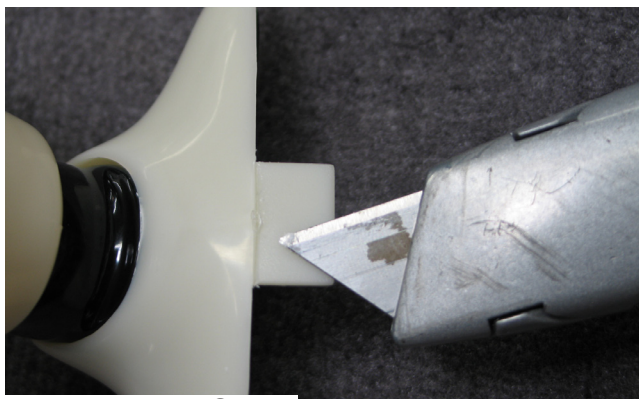


Illustration 3 Cont.



4) Remove the old mirror from your vehicle by pulling the base cover from the mirror base. Turn the cover to access the screws. Remove the screws using a Phillips screw driver. Remove the old mirror base pad from the car and install the supplied foam rubber. Install the new mirror using the original hardware. Snap the base cover down onto the base.

Illustration 4



Illustration 4 Cont.



Enjoy your new replacement mirrors!



Chrome Replacement Mirror Installation Instructions

For 1989-1997(NA) Mazda Miata

PART # 909-351

MOSS MOTORS, LTD.

440 Rutherford St. P.O. Box 847 Goleta, CA 93116
1-800-235-6954 • FAX 805-692-2525 • www.miatamania.com

Tools Required:

- * Phillips screwdriver
- * Utility knife, box cutter or razor blade

1) Remove the old mirror from your vehicle by pulling the base cover from the mirror base. Turn the cover to access the screws. Remove the screws using a Phillips screw driver. Remove the old mirror base pad from the car. Install the supplied foam rubber base pad. Install the new mirror using the original hardware. Snap the base cover down onto the base.



Illustration 1 cont



Enjoy your new replacement mirrors!

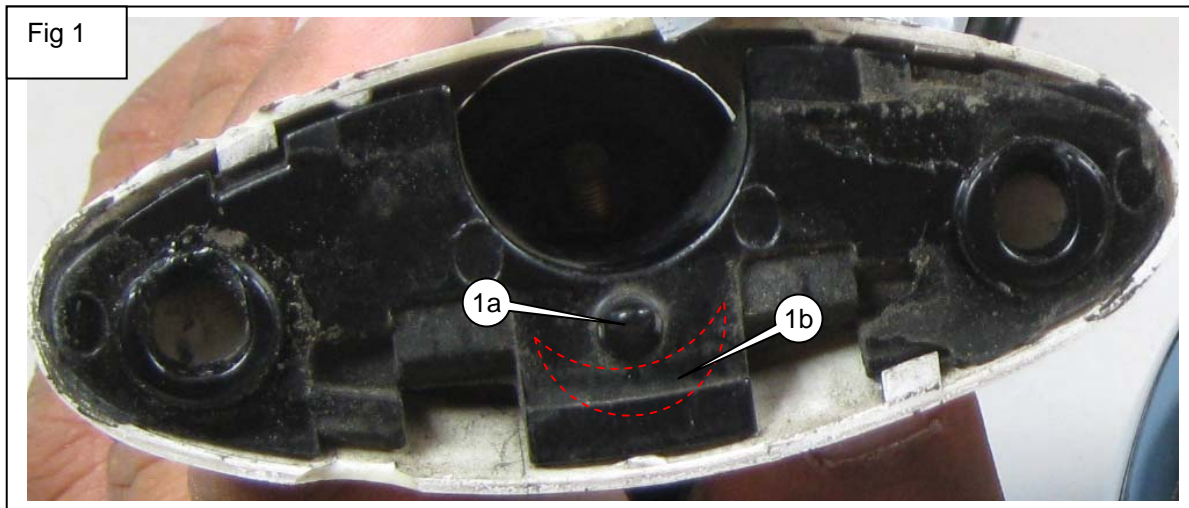


Illustration 1

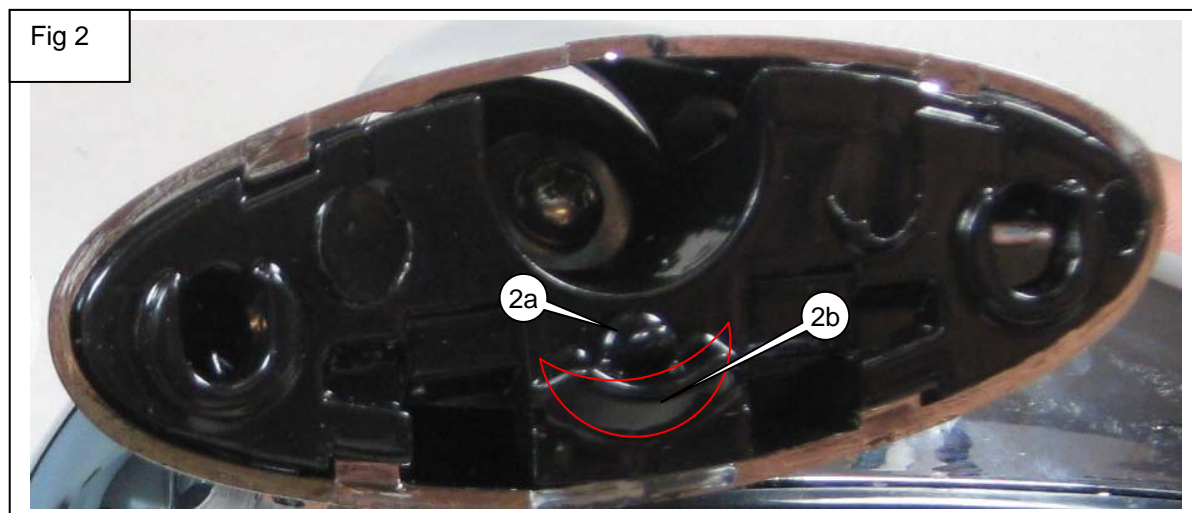


1
2
3
4
5
6
7
8
9
10
11
12
13
14
15
16
17
18
19
20
21
22
23
24

Supplemental Information for 909-350 Mirror, Replacement, Unpainted 909-351 Mirror, Replacement, Chrome MIATA 90-97 without Power or Heated Mirrors Vehicles with a VIN# before 131000



25 FIG 1 shows the Miata door mirror base plate as fitted before VIN# 131000. The large pin (1a) locates the
26 base plate on the door. Note that the area below and to the sides of the pin (1b) is flat.



27
28
29
30
31
32
33
34
35
36
37
38
39
40
41
42
43
44
45 Fig 2 shows the Miata door mirror base plate as fitted **after** VIN# 131000. Under the large pin (2a) you
46 can see the collar that was added to the base plate. The 909-350 and 909-351 also have base plates with
47 this collar. To install the 905-350 or 905-351 on a Miata with a VIN# below 131000, it will be necessary to
48 remove the collar. The mirror base is plastic and the collar can easily be removed (especially with
49 something like a Dremel tool).



Moss Motors, Ltd.

440 Rutherford Street, Goleta, California 93117

In the US & Canada Toll Free (800) 667-7872 FAX (805) 692-2510 (805) 681-3400

Moss Europe Ltd.

Hampton Farm Industrial Estate, Hampton Road West, Hanworth Middlesex, TW13 6DB

In the UK: 020-8867-2020 FAX:- 020-8867-2030