



# Power Window Motor and Regulator

PART# 907-116 and 907-117

## Removal Instructions For: 1990-1997 Miata with Power Windows

440 Rutherford St. Goleta, CA 93117  
1-800-667-7872 • FAX 805-692-2525 • [www.MossMiata.com](http://www.MossMiata.com)

### Tools Required:

- Phillips Head Screwdriver
- Ratchet and Extension
- 10mm Socket
- 14mm Socket
- Zip Ties

**Note: If your old regulator or motor is seized you may have to cut the cables to move the window glass into position to access the bolts. The driver's side is shown in these instructions. The Passenger side is mirrored but the same process.**

### Removal:

1. Before you begin, roll the main window glass fully up and close the door. Note the position of the door glass and how it sits with respect to the roof line and on the window seals. The glass should be high enough to seal against the top's weather seal but not so high that it contacts the top or top frame when closed. This position is adjustable, and (assuming it is good now) you will want to return it to the same position when the job is completed.



Figure 1

2. Roll the window to the fully down position. Remove the door panel.

### Instructions on how to remove door panels:

[mossmiata.com/media/instructions/909-925\\_INST.pdf](http://mossmiata.com/media/instructions/909-925_INST.pdf)

3. Peel back the clear plastic weather covering from the door to access the openings in the door. If desired, you can fully remove the plastic out of the way by unbolting the interior door panel.
4. Remove the 3 Phillips head screws. Remove and unplug the speaker and set aside.

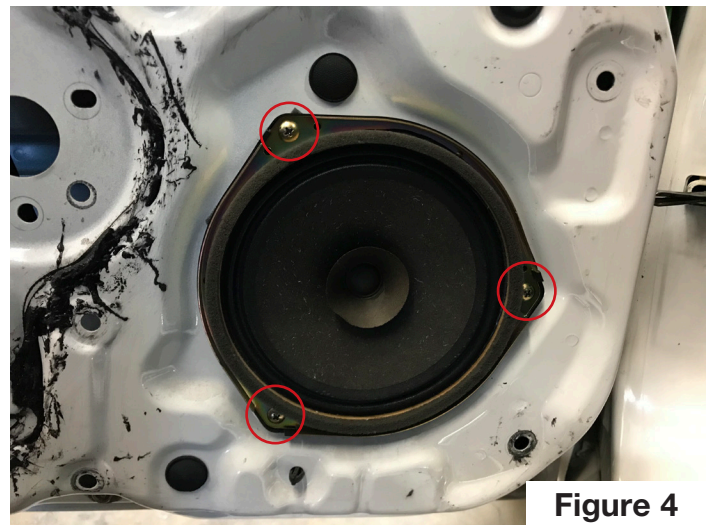
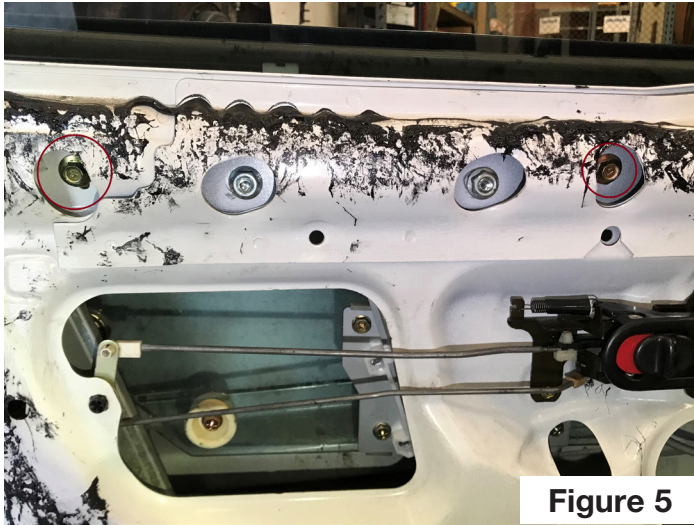


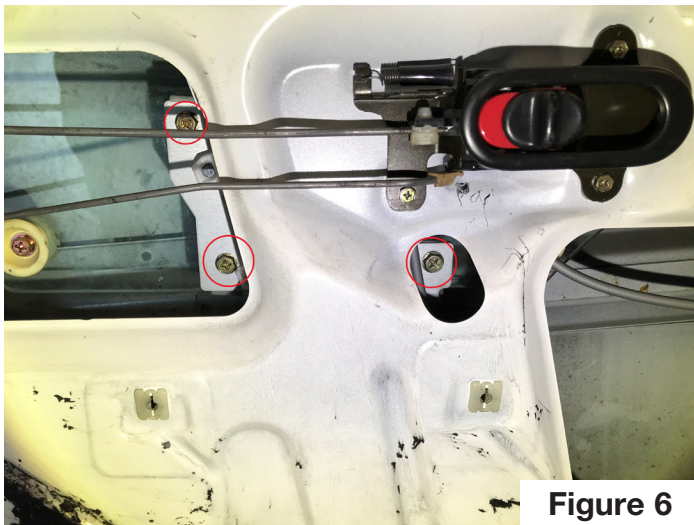
Figure 4

## Removal Instructions

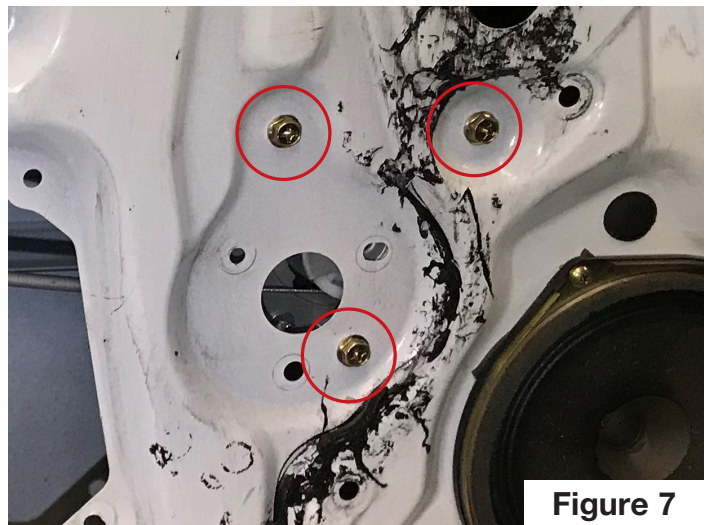
- Remove these (2x) 10mm bolts and then remove the adjustable stopper brackets from the inside of the doors. These stoppers set the "max up" position of the window glass explained in step 1.



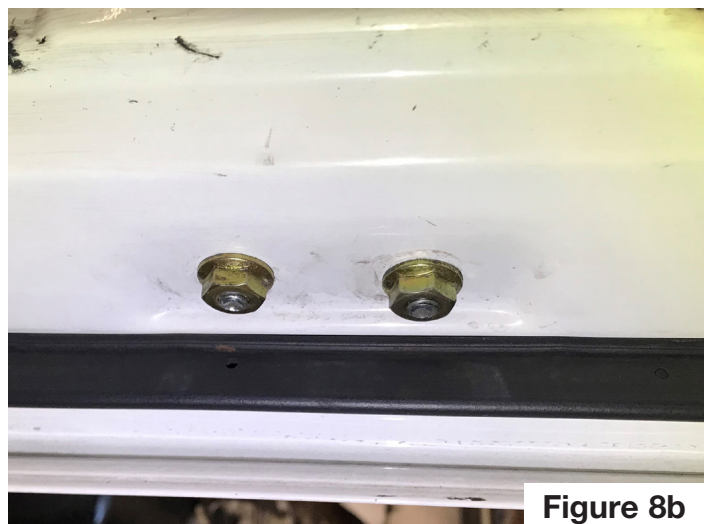
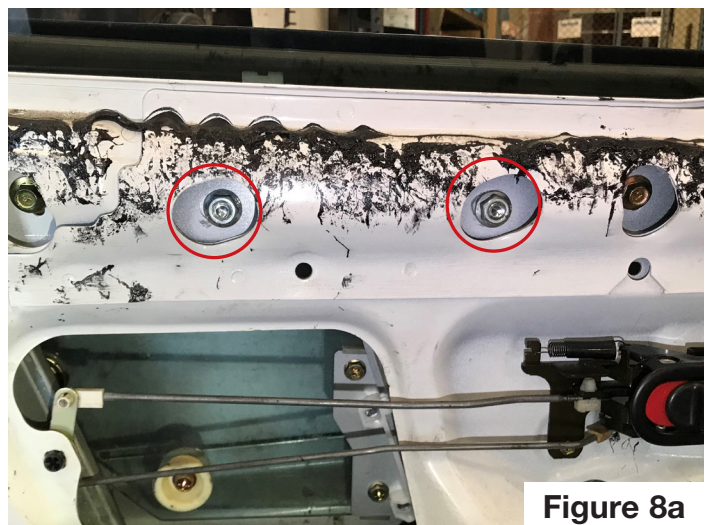
- Move the window approximately half of the way up so you can access the three bolts holding the window to the regulator. Remove these (3x) bolts. You can now pull the window glass straight up and out of the door and set it aside. It is not necessary to remove the window tracks or guides.



- Unplug the window motor and remove the (3x) 10mm head bolts holding the motor to the door.



- Remove the (2x) 14mm head bolts holding the regulator near the top of the door and the (2x) 14mm nuts holding the regulator on the underside of the door.



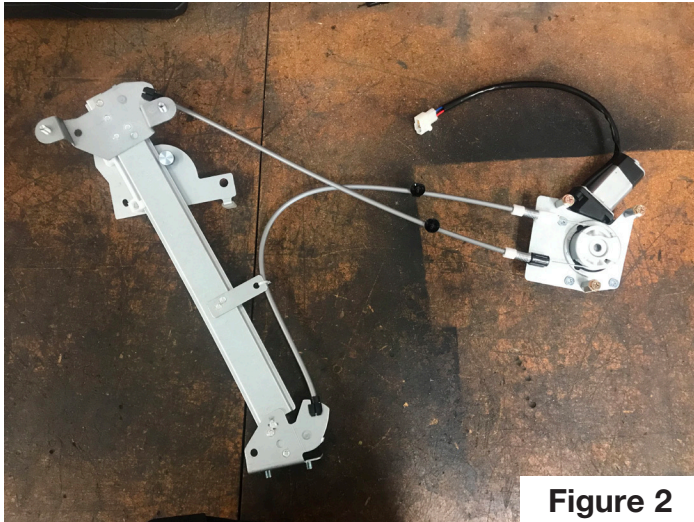
- Fish the motor and regulator out of the large opening in the door.



## Installation

**Installation is the reverse of removal.  
Pay close attention to the following:**

1. Now is a good time to clean and lubricate the window tracks. Make sure the lubricant does not get on the window itself.
2. You may need to flip the motor to ensure the bolt holes are facing out. The cables will cross each other as shown.



**Figure 2**

3. Install all bolts loosely before the final tightening.



**Figure 4**

5. The window stoppers on top are adjustable. Use the witness marks to install the stoppers to the same position they were in before.
6. Roll the window all the way up. Ensure the plastic stop knobs on the window glass come in contact with both stopper brackets. Gently close the door and make sure the glass is in the correct position when rolled up as explained in step 1. Adjust if necessary.
7. Before reinstalling door panel, slowly move window up and down multiple times, making sure the window is operating smoothly and is not going to snag on the regulator cables, electrical wires, etc.