

Power Window Installation

INSTALL THE SWITCHES AND WIRING

1) Fitting The Switches. Photos 1, 2, and 3.

Remove the switch blanking plate from the centre armrest. It is held in by two screws from underneath. Carefully slice the top of the blanking plate away with a small hacksaw (see *photo 1*) to achieve the finished result shown in *photo 2*. Now snap the switches into place as in *photo 3*.

2) Running the wires. Photos 4 and 5

Connect the supplied wiring harness to the switches. Drawing 5 shows the back of one of the electric window switches and the color of the wires soldered to it. Connect the harness wires to the switch wires matching color to color.

Some cars will have a six pin connector which was provided for factory fitted power windows, this is shown in photo 4, next to the gear shift. If you have this check that the black wire with a white stripe is live when the ignition is "on" and if so connect the red and red/blue wires from the harness onto it. The black wire should be ground and so connect the brown wire from the harness here. Shorten the wires as needed.

On some cars the remaining wires in the connector run into the doors, on others they disappear into the main loom. Check and see if on your car the wires are run into the door and, if they do, identify the colors and connect them to the blue/black wires from our harness.

If you cannot find the wires in the doors then run the blue/black wires directly into the doors .

If you do not have the 6 pin plug the brown wire must be grounded to a nearby bolt and the red and red/blue wires connected to live (12 v +) when the ignition is "on". On our car this was the thick blue wire on the back of the ignition switch. Connect using a yellow "T-Tap" connector. Run the blue/black wires from the switches into the doors.

3) Remove the glass, Photo 6.

Lower the glass to gain access to three 10mm head bolts "B" that hold the glass to the mechanism and remove these. Secure the glass.

Remove the window stops "A" and then slide the glass upwards and out.

REMOVE THE MANUAL MECHANISMS, continued..

4) Take out the Mechanism. Photos 6 and 7.

Remove the two 14mm nuts "D" and, from underneath the door, the two nuts "E" and "F". Remove three 10mm nuts at position "C" and the two bolts at "G". By pushing the window channel inwards you can free the winder mechanism.

The manual mechanism can now be removed through the aperture as shown in photo 7.

INSTALL THE ELECTRIC MECHANISM

5) **Insert The New Mechanism. Photo 8.** This is simply a reversal of the removal process for the manual mechanism.

6) **Bolt The Mechanism In Place. Photo 9.** The new mechanism is secured at positions "C", "H", front bolt "D", and rear nut "F".

Refit both bolts "G" in the front channel.

Refit the glass and attach it to the new mechanism with the three screws previously removed. *Refit the glass stops at "A" and "B"*. Connect the wires from the switch to the motor.

TESTING

Test the operation of the windows with the ignition "on" and with the engine running.

If the windows travel in the opposite direction to that required you should reverse the two connections at the motor or at the switch.

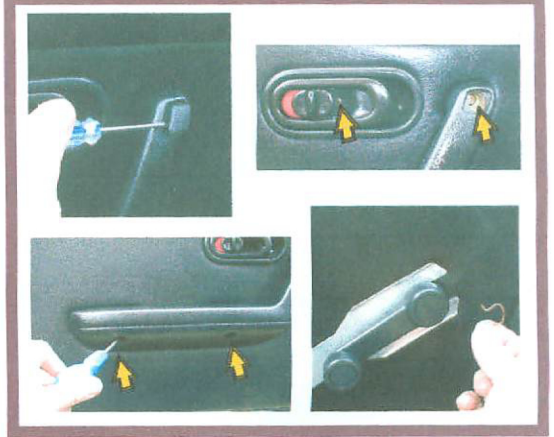
COMPLETION

Ensure that all wires are secure and will not foul on any moving parts

Fit the blanking plugs (photo 10) to the trim panels and cut off the excess stud of the plug with a hacksaw. Refit all trims and then test the operation of the windows again.

Removing the Trims

1) Door Trims



2) Door Trim Details



3) Handle Screws



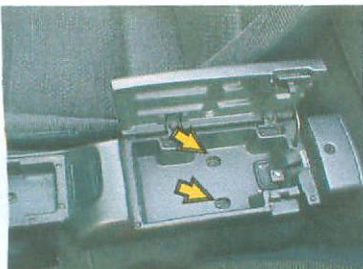
4) Steering Column

<<< Above pedals, 2 screws

Cowl, 4 screws >>>



5) Armrest Console

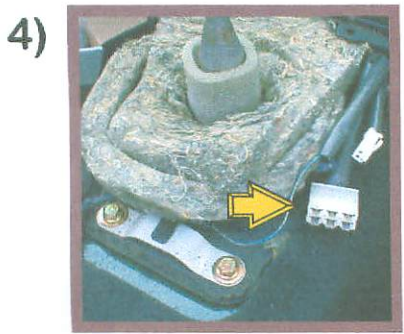
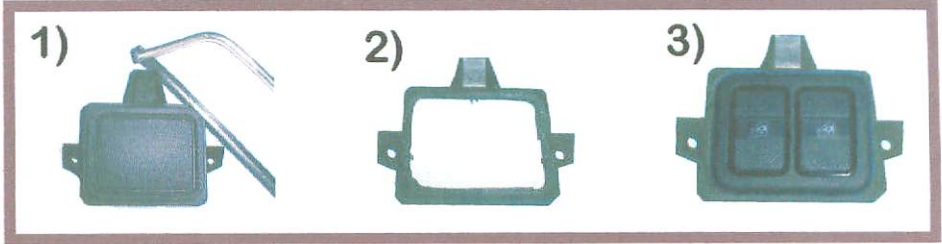


6) Glovebox

Remove the two screws and lift out the glovebox



Power Window Installation Photographs



5)

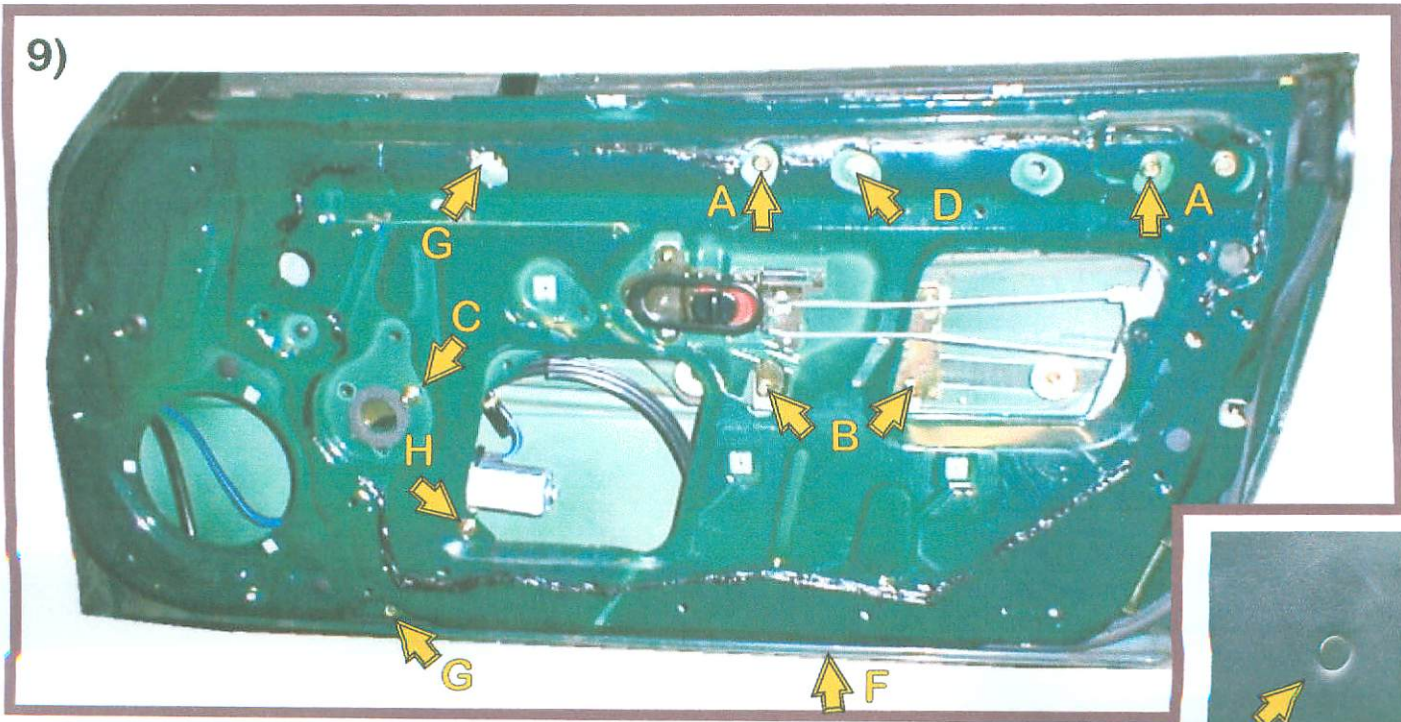
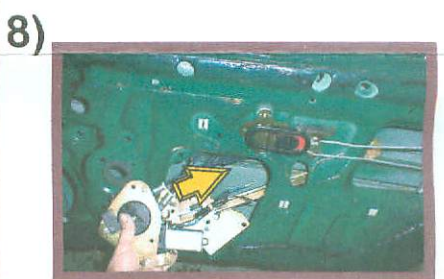
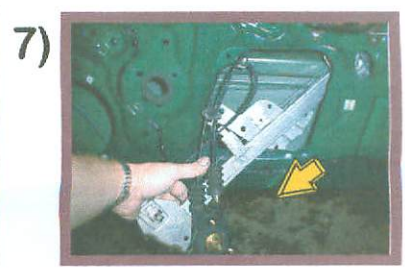
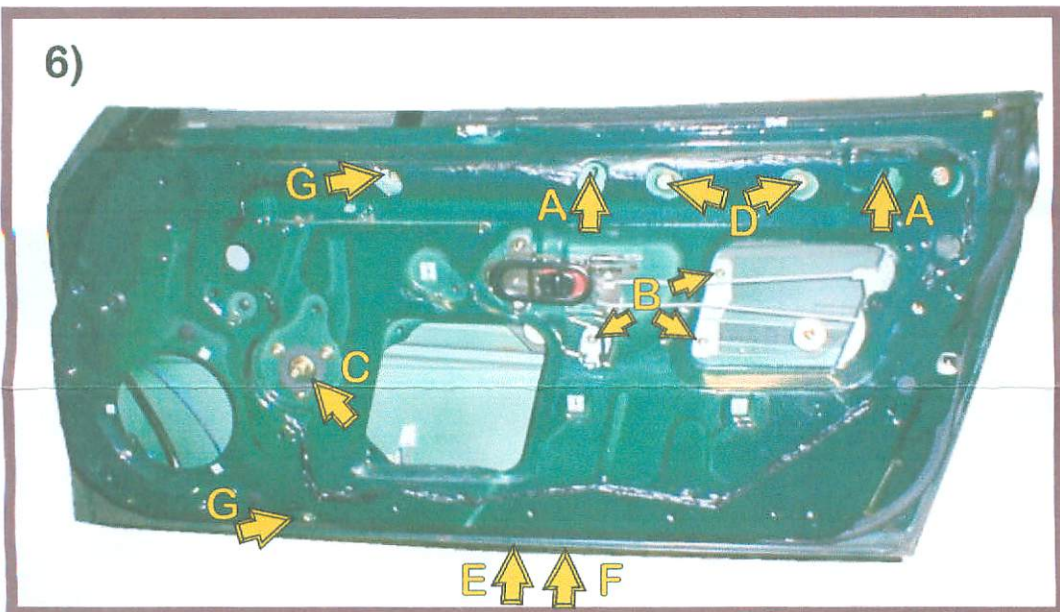
BLUE/BLACK
RED
BROWN

BROWN
RED/BLUE
BLUE/BLACK

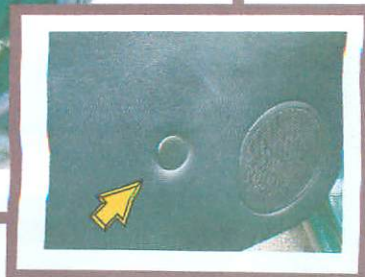
BROWN WIRES TO GROUND

BLUE /BLACK WIRES TO DOORS AND CONECT TO MOTOR

RED AND RED/BLUE WIRES TO 12 VOLT + ACCESSORY LIVE

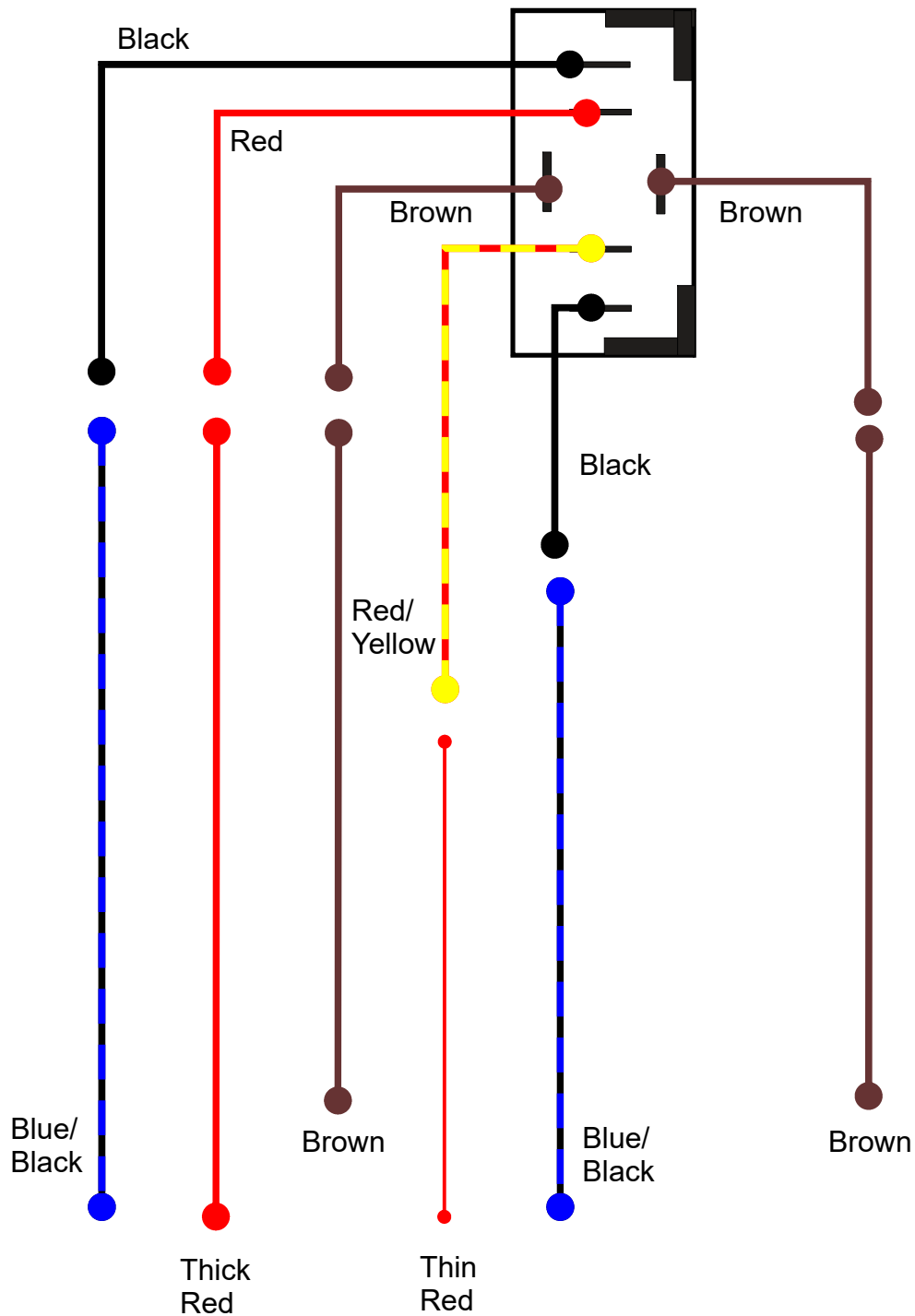


10)



Addendum.

Connecting power window harness to the switch wires:



Blue/Black wires run to electric window motors.

Brown wires are Earth/Ground

Thick Red is the main power supply. Connect to a fused 30 amp supply.

Thin Red is the switch illumination. Connect either to a wire that is live only when the ignition is on or if preferred a wire that is live only when the lights are on.