



TOURIST TROPHY®

Modern Luggage Rack, Removable

Installation Instructions

Miata 1990–2015

PART #901-600

Tools Required:

- 5mm Allen Wrench

1. Remove the contents from the packaging. Assemble the 4 black support arms as shown in the diagrams.



Installation Instructions

- Slide the long screw through the plastic locating piece and loosely thread the screw into the trunk bracket. These will be used to tighten the luggage rack to the trunk.



Figure 2

- Drop the attachment plates into the channels of the luggage rack. Now put the screws (2 for each arm) with lock washers through the assembled support arms and thread them into the attachment plates. Keep these screws hand tight until you align the luggage rack onto the trunk lid.



Figure 3A

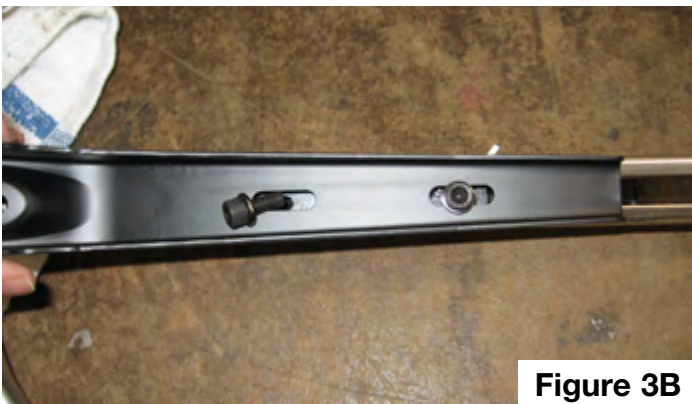


Figure 3B

- Now that the luggage rack is fully assembled, lightly place the rack onto the vehicle to determine where to place the clear protective tape. This tape will protect your paint when removing or installing the luggage rack. Ensure that your chosen location does not interfere with the 3rd brake light when the trunk is in the open position.



Figure 4A

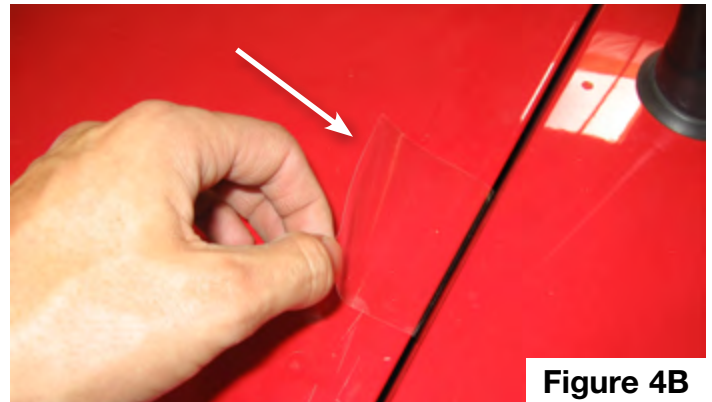


Figure 4B

- Once the protective tape is set up, you are now ready to install the luggage rack. Open the trunk slightly to slip trunk bracket around the trunk lid. Tighten down the screws on the four brackets (one side at a time) so each support arm is secured to the trunk lid.



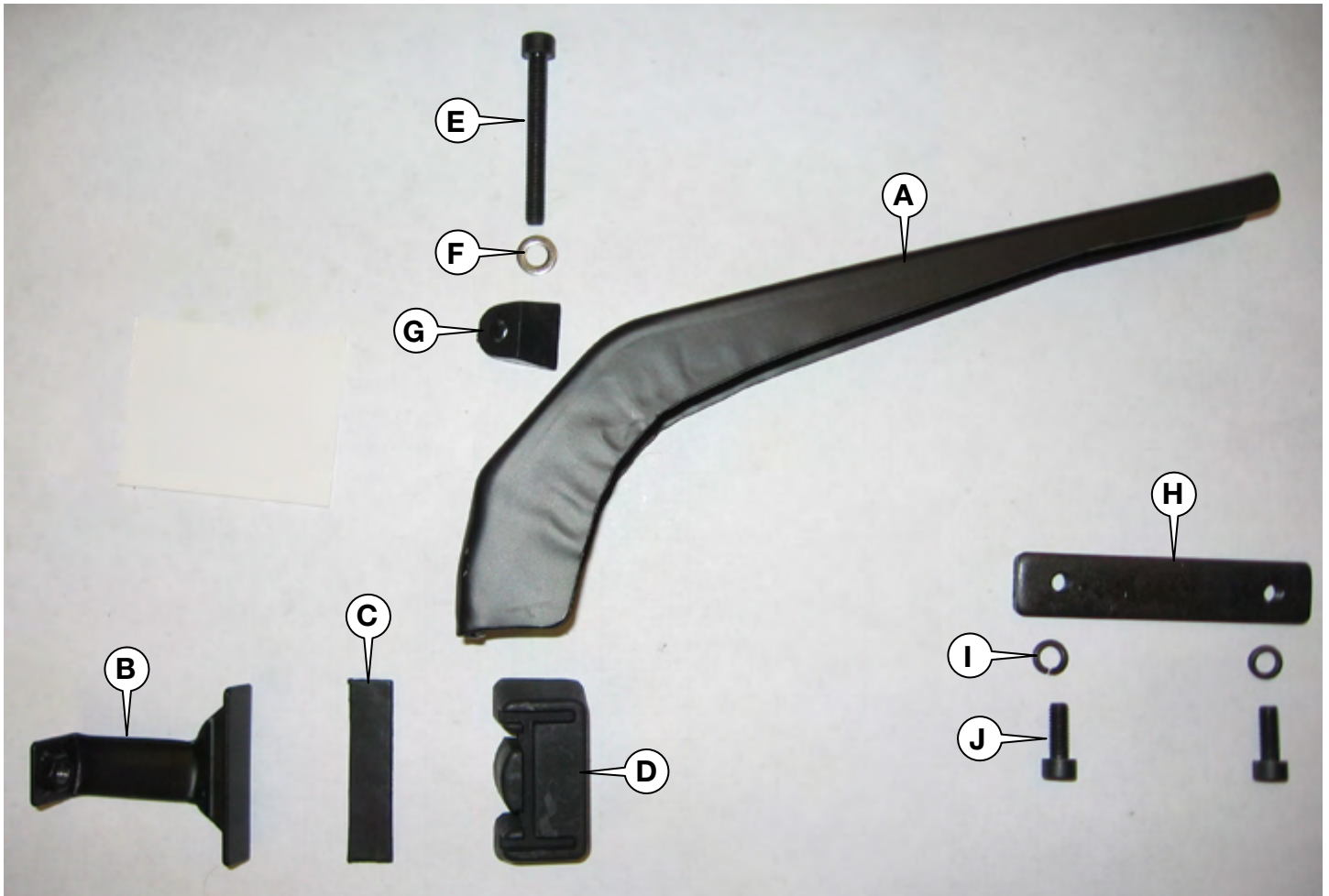
Figure 5

6. With each corner secured to the trunk lid, it is now time to tighten the support arm to the luggage rack itself. There are two screws for each support arm, which should only be hand tight at this time. Each screw must be tightened to 12 lb ft using the 5mm Allen wrench.



Figure 6

Bill of Materials		
Ref	Part	Qty
A	Support Arm	4
B	Holding Bracket	4
C	Holding Bracket Pad	4
D	Support Arm Pad	4
E	Long AHCS	4
F	Flat Washer	4
G	Locating Piece	4
H	Attachment Plate	4
I	Lock Washer	8
J	Short AHCS	8
K	Clear Paint Protector Tape (Not Pictured)	8
L	Luggage Rack (Not Pictured)	1



Designed and Distributed by Moss Motors, Ltd.

For questions or comments please contact:

Moss Motors, Ltd.
 440 Rutherford Street, Goleta, California 93117
 In the US & Canada Toll Free (800) 667-7872
 LOCAL (805) 681-3400 FAX (805) 692-2510



Moss Europe Ltd.
 Unit 16 Hampton Business Park Bolney Way
 Feltham TW13 6DB, United Kingdom
 In the UK: 020-8867-2020 FAX: 020-8867-2030